

# RULES AND REGULATIONS

Preserve Hours: Dawn till Dusk

- Follow Posted Signage at All Times
- Dogs Must Be on a Leash at All Times
- Pack Out All Trash and Dog Waste
- Stay On Marked Trails
- The Following Are Prohibited:
  - Hunting
  - Excessive Noise
  - Alcohol and Glass Containers
  - Camping and Fires
  - Collecting of Plants, Animals or Artifacts
  - Overnight Parking
  - Mountain Bikes
  - All-Terrain Vehicles
  - Horseback Riding

**IN THE EVENT OF AN EMERGENCY  
CALL 911**

Birch Ridge Ravine is a scenic, deep-sided ravine through which feeder tributaries to Blair Creek tumble dramatically. Bold, mossy rock outcrops of shale and sandstone, a mature forest of hardwoods mixed with hemlocks and white pines, and numerous stream crossings treat hikers of this preserve to a very special experience.

Although only 34 acres, Birch Ridge Ravine is part of a large, open-space greenway of preserved land that includes several RVC preserves and totals hundreds of acres. At its southernmost end, the Birch Ridge Ravine trail connects with RVC's Sunset Ridge Preserve trail corridor, which continues southward, ending at Butler Road. Hikers can park at either preserve's trailhead to enjoy a longer excursion. (See RVC's trail map for Sunset Ridge Preserve for more information.)



**ADDRESS FOR PARKING AREA:  
44 Birch Ridge Rd, Hardwick NJ 07825\***

\*Limited parking available along the shoulder of Birch Ridge Road, across the road from trailhead

**GPS COORDINATES:  
41.0371, -74.9388**



*Rhododendron illustration by Jennifer Ramirez, 2019*

## RIDGE AND VALLEY CONSERVANCY



PO Box 146  
16 Main Street, Blirstown, NJ 07825  
(908) 362-7989  
info@ridgeandvalleyconservancy.org

### ABOUT US

Ridge and Valley Conservancy (RVC) is a private, non-profit land trust that preserves natural lands in northwestern New Jersey. We strive to practice sound ecological management of the lands we've protected, safeguarding sensitive habitats and the native species that inhabit them. Many RVC preserves have hiking trails, and we offer nature education, guided hikes, and other special events for the community and for schools. Learn more about us at [ridgeandvalleyconservancy.org](http://ridgeandvalleyconservancy.org).

Scan this QR code to see the trail map on your device.



### SUPPORT RVC!

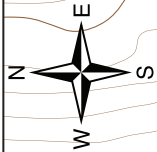
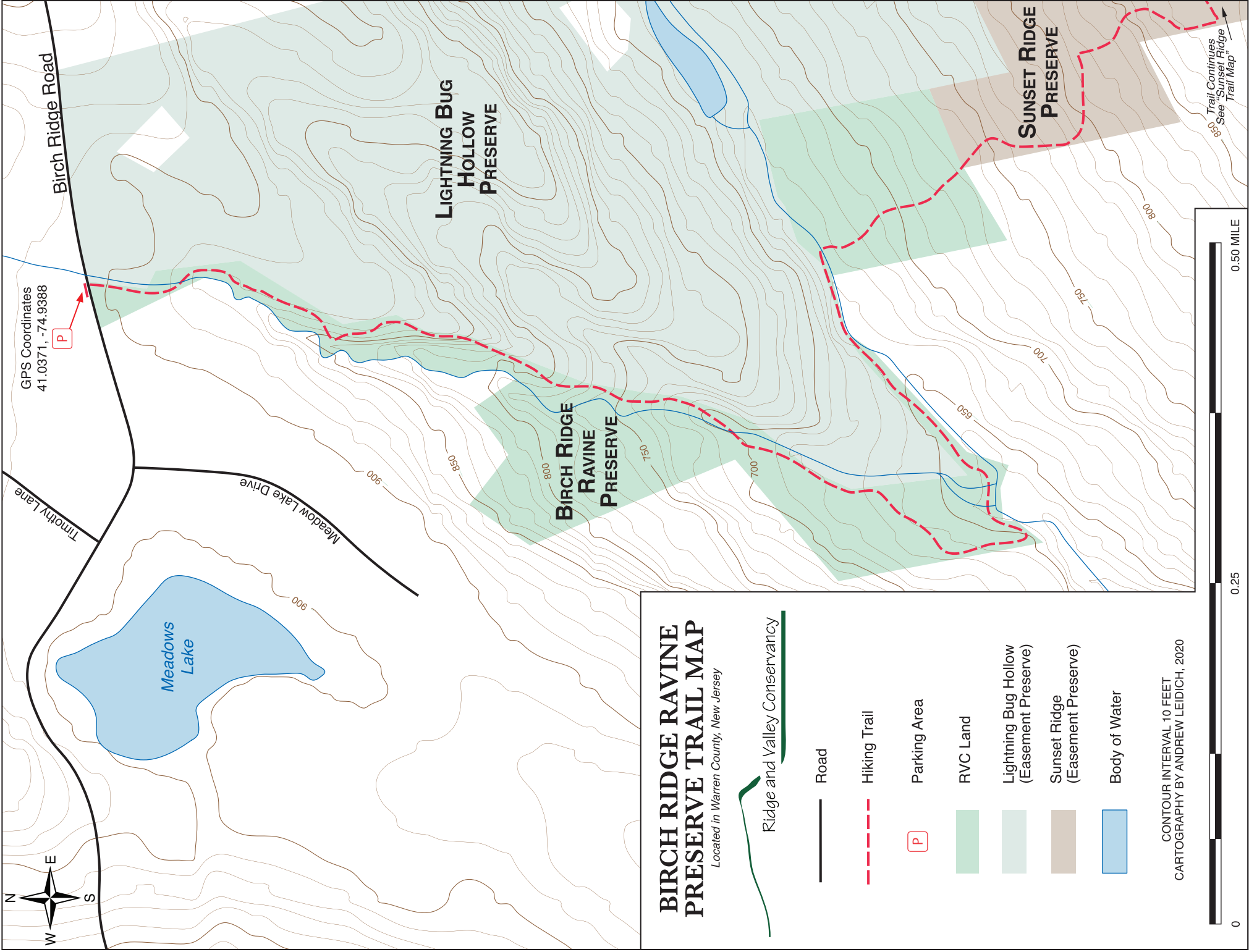
Text MYRVC to 44-321 to donate and help us care for special places like this.

Thank You!

# BIRCH RIDGE RAVINE PRESERVE TRAIL MAP



Ridge and Valley Conservancy



GPS Coordinates  
41.0371, -74.9388



Birch Ridge Road

Timothy Lane

Meadows Lake

Meadow Lake Drive

LIGHTNING BUG  
HOLLOW  
PRESERVE

BIRCH RIDGE  
RAVINE  
PRESERVE

SUNSET RIDGE  
PRESERVE

Trail Continues  
See 'Sunset Ridge  
Trail Map'

# BIRCH RIDGE RAVINE PRESERVE TRAIL MAP

Located in Warren County, New Jersey



Ridge and Valley Conservancy



Road



Hiking Trail



Parking Area



RVC Land



Lightning Bug Hollow  
(Easement Preserve)



Sunset Ridge  
(Easement Preserve)



Body of Water

CONTOUR INTERVAL 10 FEET  
CARTOGRAPHY BY ANDREW LEIDICH, 2020

